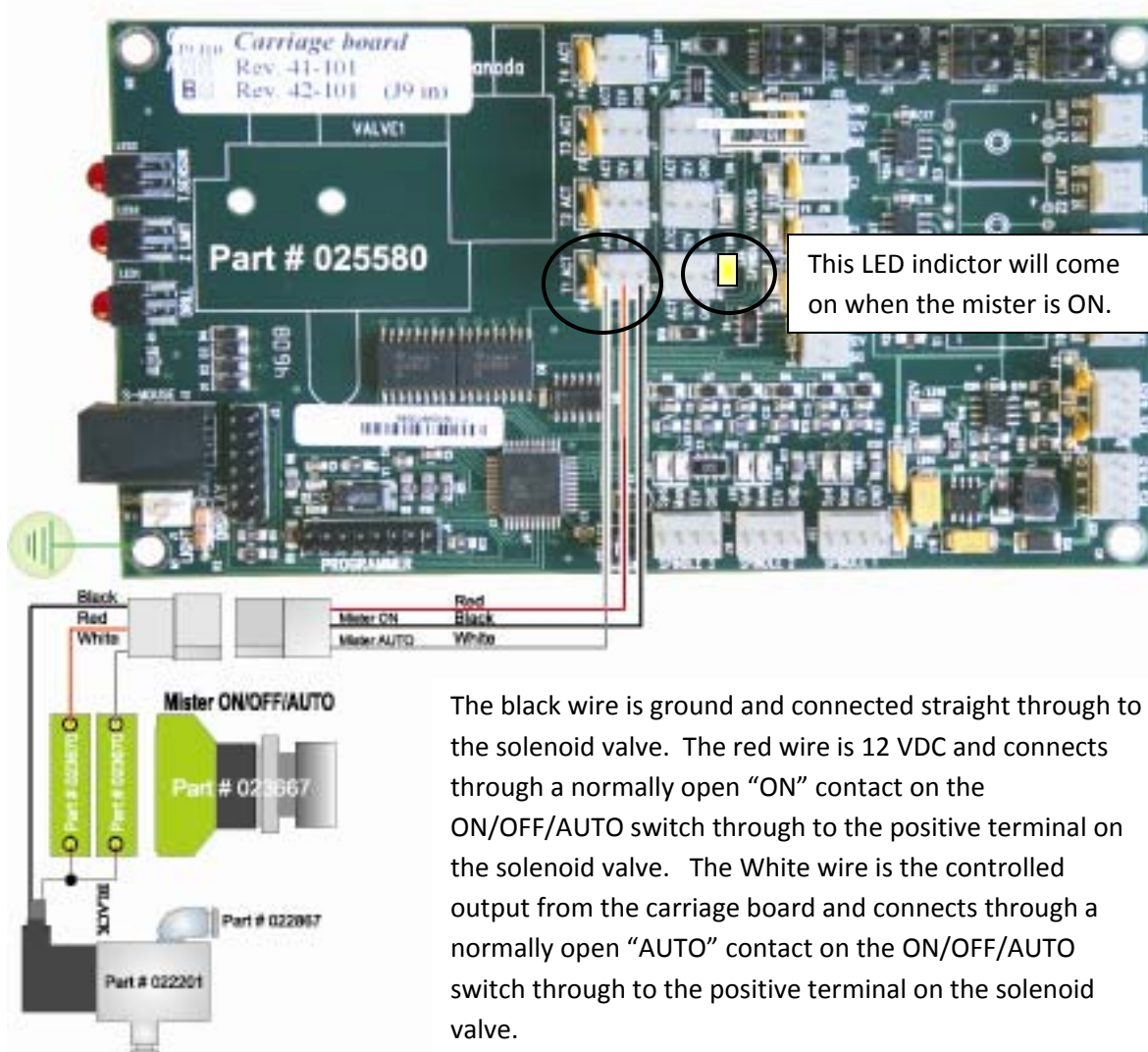


Carriage Board – Mister

The mister connection to the carriage board is shown below.

The mister itself operates on a pneumatic air supply and is turned on and off using a solenoid valve which is connect to the carriage board as shown in the diagram. The solenoid supply is from the connector marked T1 ACT and is 12 VDC PNP at 100 mA so an appropriately sized solenoid valve is required.

The A2MC turns on the mister with M7 or M8 and turns it off with M9. The A2MC can also be set up to turn the mister on automatically at the start of a job and turn it off at the end of a job by using function 50. See documentation on M Codes and function 50 for further details.



The black wire is ground and connected straight through to the solenoid valve. The red wire is 12 VDC and connects through a normally open "ON" contact on the ON/OFF/AUTO switch through to the positive terminal on the solenoid valve. The White wire is the controlled output from the carriage board and connects through a normally open "AUTO" contact on the ON/OFF/AUTO switch through to the positive terminal on the solenoid valve.