

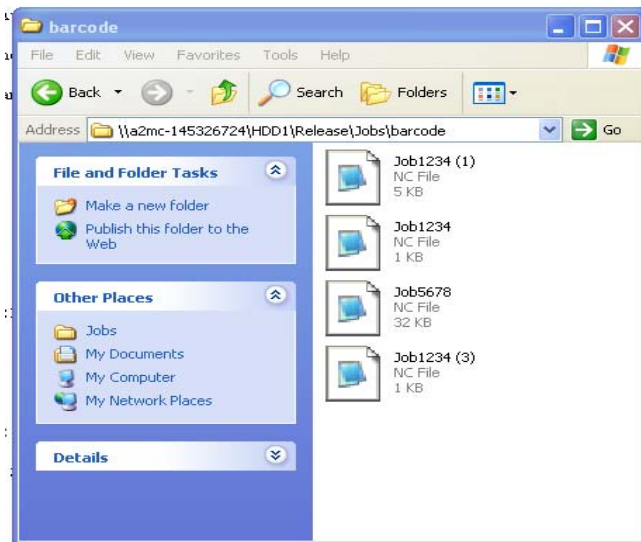
Bar Code Scanner Input

The A2MC can be controlled by using bar code scanners. Pretty much any bar code scanner with a keyboard compatible USB output will work. This method is easily the most common so there is an unlimited choice of scanner available that can be used:



Start Jobs

The most common use of bar code scanners is to select and start jobs off of the bar codes printed on either drawing or work orders.



The barcode scanner will only read jobs from a Jobs sub directory called "barcode" as shown on the left. Since the jobs are called by bar code anyway there is no limit on how many jobs can be stored in this directory. The job names must exactly match the bar codes that are required to call them up. Although the jobs can be any alphanumeric combination it's usually best to number the jobs to avoid conflicts and duplications.

Simply by scanning the job name the A2MC will automatically search in the barcode sub directory and make that job active. It will appear immediately on the operator console screen.

This job can be started by simply scanning the word Start:



Jobs can be started automatically as soon as the file name is scanned if the A2MC is put into auto start mode. This is done by scanning the word "Autostart":



Once it auto start mode jobs will start as soon as they are scanned. To get out of auto start mode simply scan "Autostart" again.

Functions

Functions can also be initiated by using the bar code scanner. Simply scan the function numbers as follows:



Function 10 is particularly a useful one to be able to scan. Once the function is scanned the rest of the function inputs need to be done through the operator console.